

Riverland life fm NEWS

100.7

February 2019
Vol.23 No.1

Welcome to another great year in radio with Riverland Life FM!

We're looking forward to busy times and we hope that you will join us in our events and activities and in making a joyful noise to the Lord with great music and positive talk on the radio!



Loxton Mardi Gras

What better way to start getting out into the community this year than with a street parade! The Loxton Mardi Gras is a great family event and Riverland Life FM volunteers joined in the fun with a float. This year's theme was 'Showtime' and there was plenty of colour and costume on display.



Office Assistant

Riverland Life FM has a talented new office assistant. Margot Smythe has joined our team to help around the office and with the development of publications such as sponsorship flyers, designs for email, web and social media communications, and this newsletter! Margot has only just started in the role and has already made a wonderful contribution. We welcome her to our team!



Upcoming Dates

**6
APR**

**Relay for Life
BBQ fundraiser
at Loxton Home
Hardware
Saturday 6th April
from 8:30am to
1:30pm**

**27
APR**

**Riverland
Football
Broadcast 2019
kicks off on
Saturday 27th
April**



New Sports Show

Riverland Life FM is airing a new radio show, **Grass Roots**, produced at 1079Life in Adelaide and hosted by 'Bevo and Marksy'. The show runs from 10am to 12pm on Saturdays and features district level sporting competitions, SANFL with some Riverland input as well.

THANK YOU!

Our thanks to all our station sponsors for their support:

Beech Hardware, Christian Family Bookshop, The Country Bakehouse, Dept Jobs & Small Business (Hope Media), Jannette Fullham Photography, Ken's Exhaust Systems, Living Waters Christian Community, Mike Taylor Accounting, Nitschke Bulk Transport, PIRSA (Fruit Fly Notification), Reimaginn Consulting, Rivergum Christian College, Scarfes Electronics.

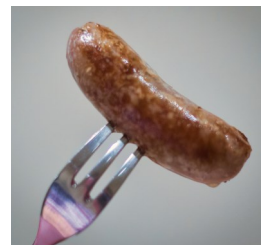


RELAY FOR LIFE

This year the team at Riverland Life FM is really excited to be taking part in the Riverland Relay for Life on **Saturday 26th October** at the Berri Oval.

You can get involved too by donating at our team page or you could even join our team! It's easy! Just go to the website, www.relayforlife.org.au and click on the link, 'Join A Team', then click on 'Register' to search for our team. When you find our team, 'Riverland Life FM', you can also opt to make a donation.

We are having our first Relay for Life fundraiser with a **BBQ** at Home Hardware in Loxton on **Saturday 6th April** from 8:30am to 1:30pm. All money raised will go to Relay for Life. Please come and support this by buying a sausage and a drink! We'd love to see you there. There will be other fundraising events in the coming months, which we will let you know about. *Thanks for your support!*



New RYM Time Radio Show

Starting in March we have a new local show called RYM Time. No, it's not a poetry recitation, it's Erin and friends keeping you up to date with the activities of Riverland Youth Ministries and youth in general in our churches. RYM Time debuts Thursday 7th March, 8am (after the news) with a repeat on Friday at 3:30pm.

Board Meeting

The Board of Management met on Monday 25th February at the Berri Church of Christ and the opportunity was taken to make it an 'open' meeting and invite observers. Members are welcome to attend Board meetings and if you would like to be notified of meetings that are coming up please contact our office. More open meetings will be publicised during the year.



Partner with Riverland Life FM in sharing God's message of hope throughout our community.

Membership is \$55 inc GST per year.

Renew or join up today at

riverlandlife.org.au/membership

March is Membership month, time to renew annual membership - or join up!

Why be a member?

Together with other supporters, staff and volunteers, members of Riverland Life FM share a common vision and purpose in broadcasting good news and positive radio content to the Riverland and upper Mallee region. Full Members can participate in decisions on how the station is governed, by attending and voting at General Meetings of our Association (Riverland Christian Radio Inc). Members are an integral part of the governance of the station and are partners in the mission of the Riverland Life FM. We need to build up our membership base in order to continue to develop good leadership and strong participation. Join up today and be a part of local mission in the Riverland!